

The Port Side Post

June 2011
Volume #1
Edition #1



2147 South Columbus Blvd., Pier 80
Philadelphia, PA 19148 USA
215-218-3060 (phone) * 215-218-3078 (fax)
www.jhstevedoring.com

Special Interest Articles:

- Safety is our Goal!
- NTAS Replaces Homeland Security Advisory System
- Wind Turbine's Foundation Adapters have arrived in Philadelphia



"Success in business requires training, discipline and hard work. But, if you're not frightened by these things, the opportunities are just as great today as they ever were".

David Rockefeller

JH in the News and On the Move

JH Stevedoring has been very busy over the past few months because of the increase in the tonnage of forest products shipped into the Philadelphia Port. These products consist of high quality coated paper, lumber and other forest products.

JH Stevedoring, along with Penn Warehousing & Distribution, Inc., have been the subject of ar-



ticles featured in recent publications such as the International Forest Products Transport Association (IFPTA) Journal titled, "Penn helps return growth in forest products to the Port

of Philadelphia", a RISI.com article titled, "A day in the life of Penn Warehousing and Distribution"; and, the PaperAge magazine article titled "Putting Stock in Outsourcing the Functions of Warehousing & Distribution". All three of these articles appeared in trade publications with a worldwide circulation in the forest product industry.

Work Place Safety

Since being awarded the 2008-09 "Industry Leader Safety Award" by Signal Mutual Indemnity Association Ltd., JH Stevedoring has continued their outstanding performance in safety.

2010 was no different. Once again, JH Stevedoring was able to post a "Zero Days Lost Time" report. We are working hard in 2011 to maintain this level of excellence!

With the goal of "Safety

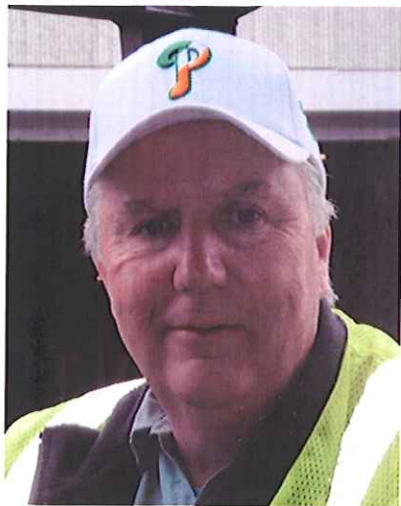
Comes First", our organization has enlisted the help of Sonny Pezzano, an Independent Safety Consultant and Trainer. Sonny has been working closely with our managers and employees, while gearing his operational and safety training presentations to our specific industry. He also conducts safety inspections here at the Port of Philadelphia. These inspections include vessel, wharf and warehouse safety audits.



The word "Longshoremen" goes back to a time when there was very little mechanical help to unload a large sailing vessel. Everything was off-loaded by hand! The word "Longshoreman" originated when crews of men intending to off load a ship would line up along the water's edge and thus were referred to as "along-the-shore men". With time, the term was reduced to "longshoremen".

The Port Side Post

Employee Spotlight!



Mike Brennan

JH Stevedoring would like you to meet Michael Brennan. Mike has been our Mechanic/Gear Man since 2001.

He has been a member of the International Longshoremen Association (ILA), Local 1291, since 1973. He currently serves as a Union Trustee. He once sat on the ILA's Scholarship Committee. Mike's family has been a part of this union for decades.

In the 1970's, Mike served our country in the United States Army. He has been married for over 37 years to his lovely wife, Bernice. The two have two sons, Michael and Shaun, and two beautiful granddaughters.

Mike has taken various courses at local colleges to further his knowledge of mechanics. He holds certificates in refrigeration, welding and electrical repairs, just to name a few.

Of course, Mike does enjoy his downtime by relaxing with his three dogs, collecting coins and playing his guitars. His favorite pastime, which dates back to his childhood, is maintaining fish aquariums. He has aquarium tanks that hold up to 125 gallons and which house numerous fresh and salt water fish. One day Mike would like to purchase a classic car.

New Port Security – Delaware Bay Sector

On April 22, 2011, an announcement was issued by the Area Maritime Security Committee, USCG Sector Delaware Bay, that the color-coded Homeland Security Advisory System was replaced by a two-level National Terrorism Advisory System (NTAS).

This NTAS Alerts will consist of the following two alerts: Imminent Threat Alert – warns

of a credible, specific and impending terrorist threat against the United States; Elevated Threat Alert – warns of a credible terrorist threat against the United States.

This information will be more effective in communicating information about terrorist threats by providing timely, detailed information to the public, gov-

ernment agencies, first responders, airport and other transportation hubs including the private sectors.

To learn more about these changes and how they affect the maritime community, please visit the following website:

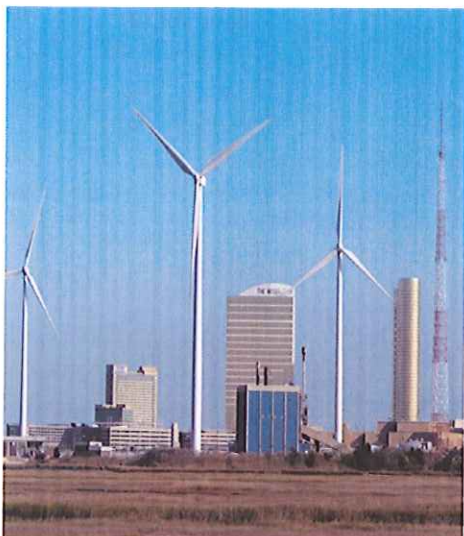
www.dhs.gov/files/programs/ntas.shtm

COMMENTS? SUGGESTIONS?

This is your Port Side Post! If you have ideas for future articles or information you'd like to see included in *The Port Side Post*, please let us know.

To submit ideas or suggestions, please contact: Chrissy Bruno –

chrissy.bruno@pennci.com



Wind Turbine's Foundation Adaptors Have Arrived

On May 19, 2011, GE Wind Energy utilized the services of JH Stevedoring for handling the receipt of GE's Foundation Adaptors for Wind Turbines off the Transeagle Vessel. The Foundation Adaptors are 15.7' in diameter and 39" high. Each piece weighs about 13 tons.

GE's Wind Energy is one of the world's leading wind turbine suppliers, with over 13,800 worldwide wind turbine installations.

A wind turbine uses wind which is a form of solar energy, to provide mechanical power. Mechanical power can be used for pumping water and grinding grain. When con-

nected to a generator, a wind turbine can also produce electricity.

Currently, New Jersey lawmakers are discussing the feasibility of installing another offshore wind farm in Atlantic City.

To the left is a picture of Atlantic City's Wind Farm, the first wind farm built in the State of New Jersey.